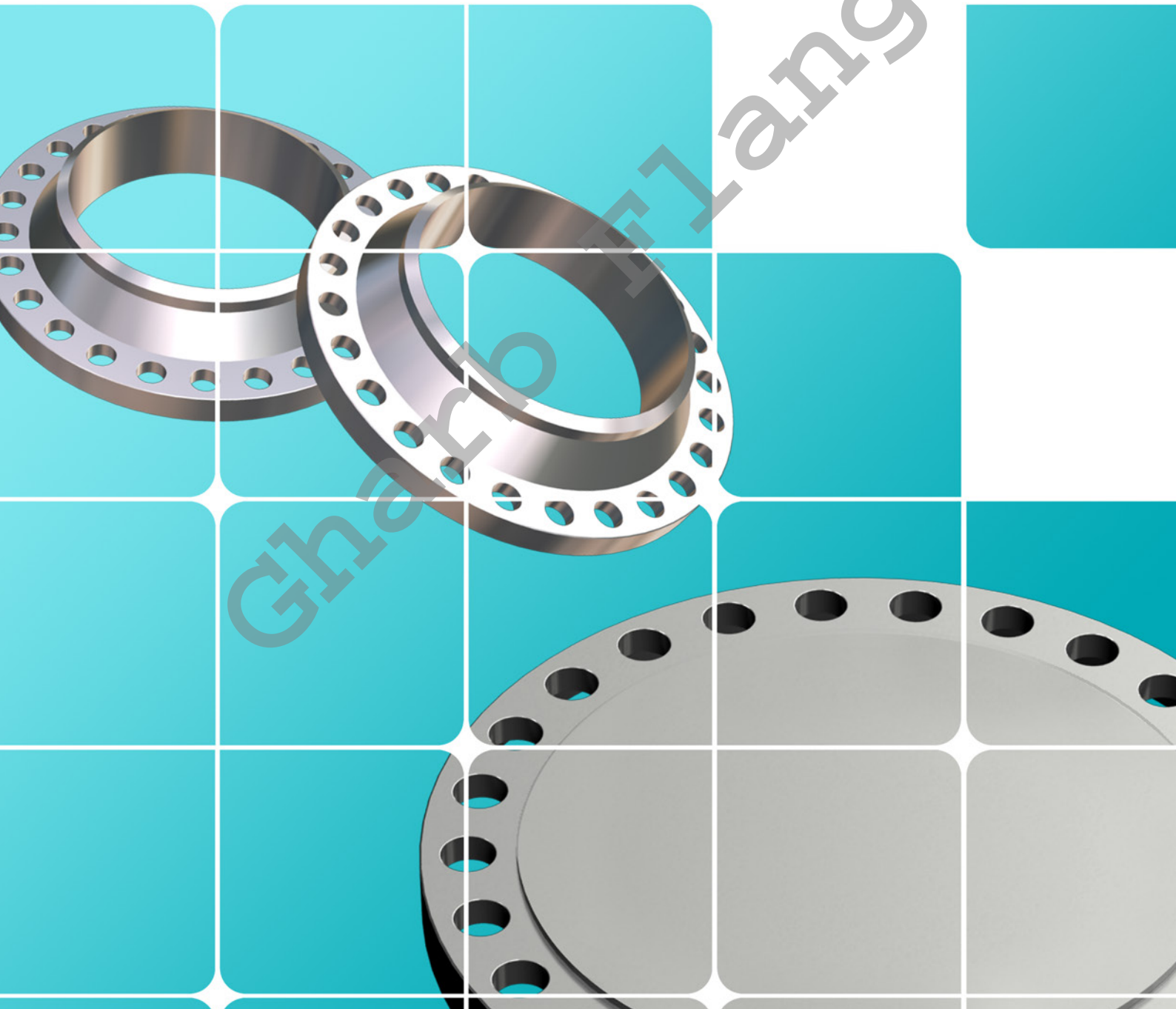
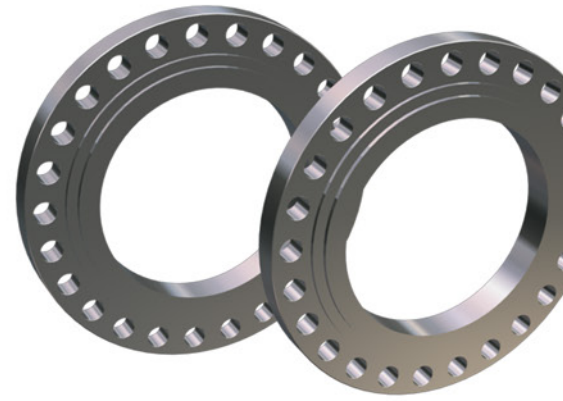




**GharbFlange**  
Since 1979

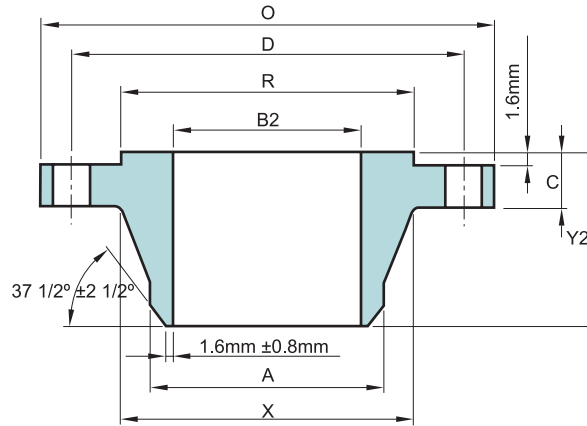
# B.S. 3293 FLANGES

- Class 150 Flanges
- Class 300 Flanges
- Class 400 Flanges
- Class 600 Flanges

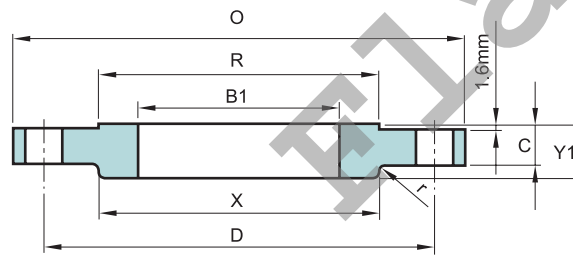




## CLASS 150 FLANGES



WELDING NECK



SLIP-ON

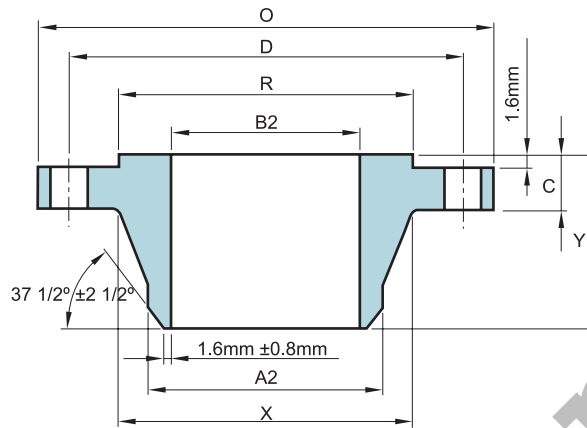
Unit : mm

Nominal Pipe Size	O.D. of Flange	Thic-kness of Flange Min	Outside Diameter of Large End of Hub	Outside Diameter of Small End of Hub	Length Through Hub			Flange Bore		Diameter of Bolt Circle	Raised Face Outside Diameter	Drilling			Length of Stud - Bolts	Length of Headed Bolts
					Slip-on	Welding Neck	Fillet Radius	Slip-on	Welding Neck			Number of Bolt Holes	Diameter of Bolts	Diameter of Bolt Holes		
26	870.0	50.8	724.0	660.4	85.5	127.0	6.4	666.8	806.5	743.0	24	32	35.0	171.5	146.0	
28	927.0	52.4	781.0	711.2	87.5	128.5	6.4	717.6	863.6	793.8	28	32	35.0	178.0	152.5	
30	984.5	54.0	832.0	762.0	89.0	130.0	6.4	768.4	914.4	857.3	28	32	35.0	178.0	152.5	
32	1060.5	57.2	889.0	812.8	92.0	133.5	7.9	819.2	977.9	908.1	28	38	41.5	197.0	165.0	
34	1111.0	58.7	940.0	863.6	93.5	135.0	7.9	870.0	1028.7	958.9	32	38	41.5	203.0	171.5	
36	1168.5	60.3	997.0	914.4	95.5	136.5	7.9	920.8	1085.9	1022.4	32	38	41.5	203.0	171.5	
38	1238.0	60.3	1060.5	965.2	95.5	136.5	9.5	971.6	1149.4	1073.2	32	38	41.5	203.0	171.5	
40	1289.0	63.5	1111.0	1016.0	98.5	139.5	9.5	1022.4	1200.2	1124.0	36	38	41.5	209.5	178.0	
42	1346.0	66.7	1168.5	1066.8	101.5	143.0	9.5	1073.2	1257.3	1193.8	36	38	41.5	216.0	184.0	
44	1403.5	66.7	1219.0	1117.6	101.5	143.0	11.1	1123.9	1314.5	1244.6	40	38	41.5	216.0	184.0	
46	1454.0	68.3	1270.0	1168.4	103.0	144.5	11.1	1174.7	1365.3	1295.4	40	38	41.5	222.5	190.5	
48	1511.5	69.9	1327.0	1219.2	105.0	146.0	11.1	1225.5	1422.4	1358.9	44	38	41.5	222.5	190.5	

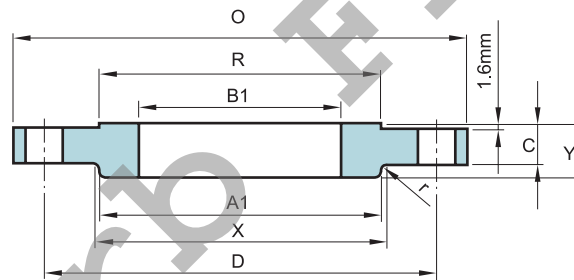
To be specified by Purchaser.



## CLASS 300 FLANGES



WELDING NECK



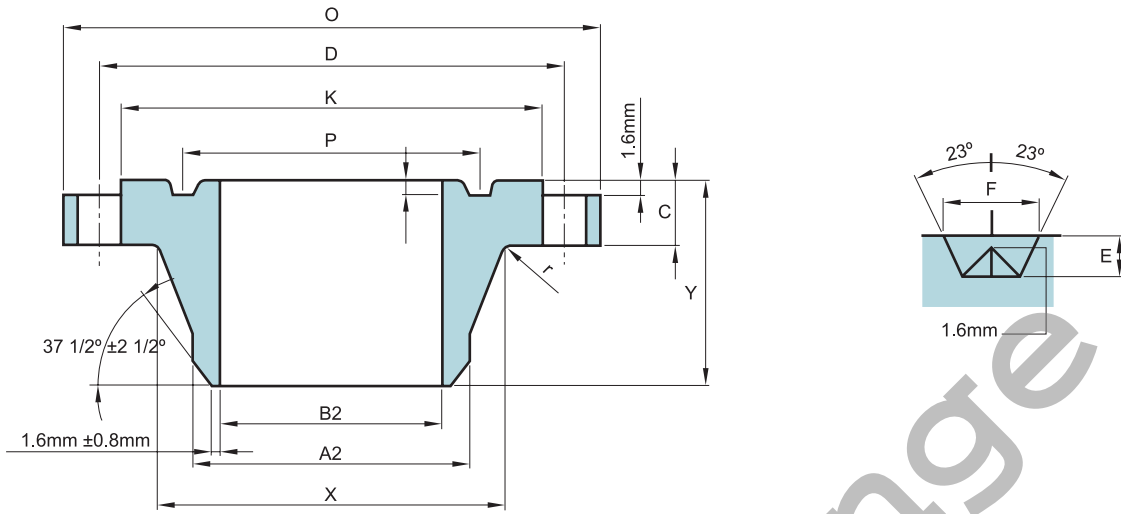
SLIP-ON

Unit : mm

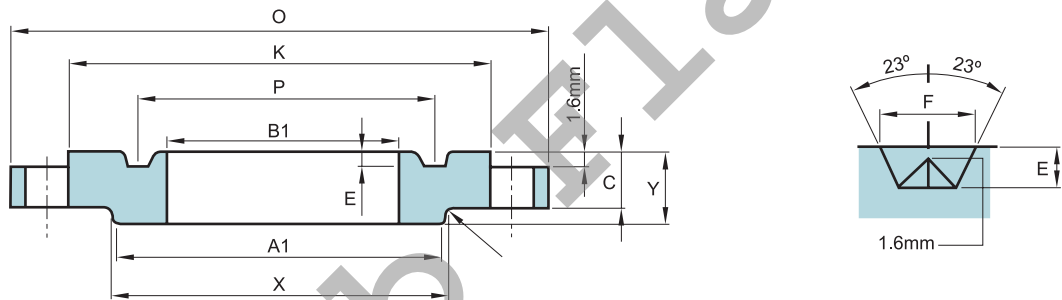
Nominal Pipe Size	O.D. of Flange	Thickness of Flange Min	Outside Diameter of Large End of Hub	Outside Diameter Small end of Hub		Length Thr. Hub	Fillet Radius	Flange Bore		Drilling		
				Slip-on	Welding Neck			Slip-on and Welding Neck	Slip-on	Welding Neck	Diamter of Bolt Circle	Number of Bolts
26	971.5	79.4	720.5	687.4	666.8	184.0	9.5	666.8	To Be Specified By The Purchaser	876.3	28	
28	1035.0	85.7	774.5	739.8	717.6	197.0	11.1	717.6		939.8	28	
30	1092.0	92.1	827.0	792.2	768.4	209.5	11.1	768.4		997.0	28	
32	1149.5	98.4	881.0	844.6	819.2	222.0	11.1	819.2		1054.1	28	
34	1206.5	101.6	936.5	896.9	871.5	232.0	12.7	870.0		1104.9	28	
36	1270.0	104.8	990.5	949.3	922.3	241.5	12.7	920.8		1168.4	32	



## CLASS 300 FLANGES



WELDING NECK  
RING JOINT



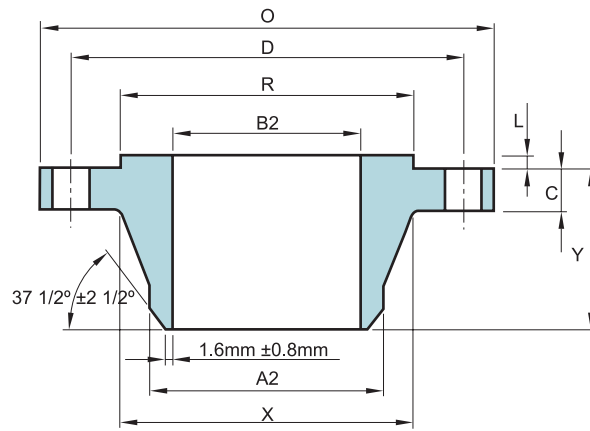
SLIP - ON  
RING JOINT

Unit : mm

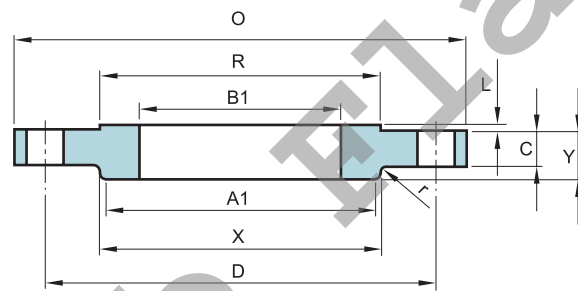
Nominal Pipe Size	Drilling		Facing Dimensions					Ring Number	Length of Stud Bolts		Length of headed bolts	
	Diameter of Bolts	Diameter of Bolt Holes	Raised Face	Ring - Joint					Raised Face	Ring Joint	Raised Face	Ring Joint
			Outside Diam.	Pitch Diam.	Groove Width	Depth of groove E.	Diam. of Raised Portion					
			R	P	F	L	K					
26	41.5	44.5	749.3	749.3	19.9	12.7	809.6	R93	247.5	279.5	216.0	241.5
28	41.5	44.5	800.1	800.1	19.9	12.7	860.6	R94	260.5	292.0	228.5	254.0
30	44.5	47.5	857.3	857.3	19.9	12.7	917.6	R95	279.5	311.0	241.5	267.0
32	47.5	51.0	914.4	914.4	23.2	14.3	984.3	R96	298.5	330.0	260.5	286.0
34	47.5	51.0	965.2	965.2	23.2	14.3	1035.1	R97	305.0	336.5	267.0	292.0
36	51.0	54.0	1022.4	1022.4	23.2	14.3	1092.2	R98	317.5	349.5	273.0	305.0



## CLASS 400 FLANGES



WELDING NECK



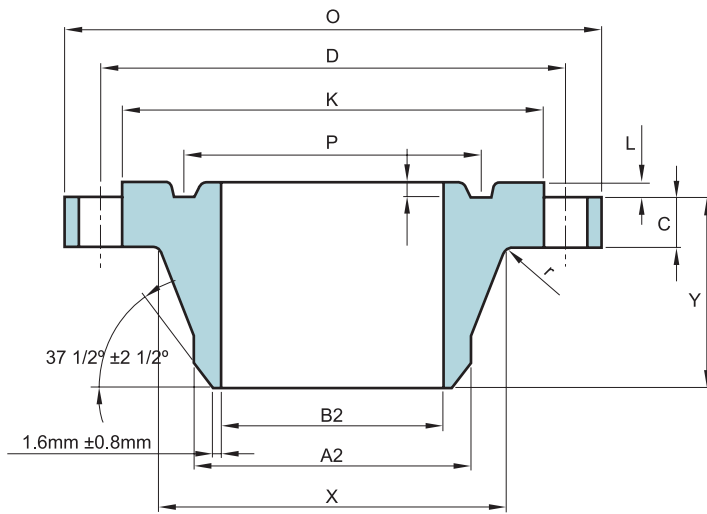
SLIP-ON

Unit : mm

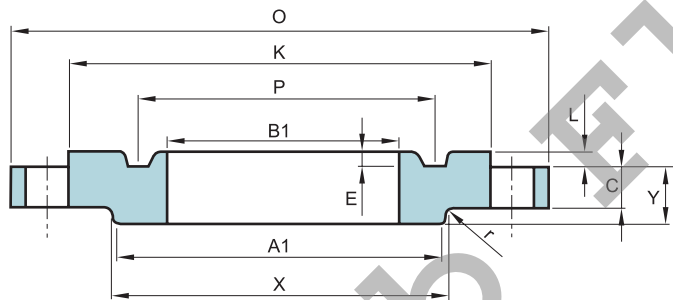
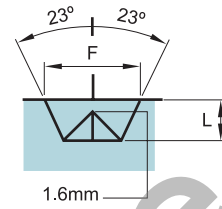
Nominal Pipe Size	O.D. of Flange	Thickness of Flange Min	Outside Diameter of Large End of Hub	Outside Diameter Small end of Hub		Length Thr. Hub Slip-on and Welding Neck	Fillet Radius	Flange Bore		Drilling	
				Slip-on	Welding Neck			Slip-on	Welding Neck	Diameter of Bolt Circle	Number of Bolts
				A1	A2						
26	971.5	88.9	727.0	693.7	668.3	193.5	11.1	666.8	To Be Specified By The Purchaser	876.3	28
28	1035.0	95.3	782.5	746.1	719.1	206.5	12.7	717.6		939.8	28
30	1092.0	101.6	836.5	800.1	769.9	219.0	12.7	768.4		997.0	28
32	1149.5	108.0	889.0	852.5	822.3	232.0	12.7	819.2		1054.1	28
34	1206.5	111.1	944.5	905.1	873.1	241.5	14.3	870.0		1104.9	28
36	1270.0	114.3	1000.0	958.9	925.5	251.0	14.3	920.8		1168.4	32



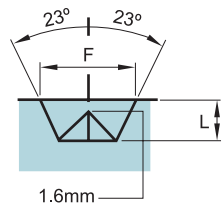
## CLASS 400 FLANGES



WELDING NECK  
RING JOINT



SLIP - ON  
RING JOINT

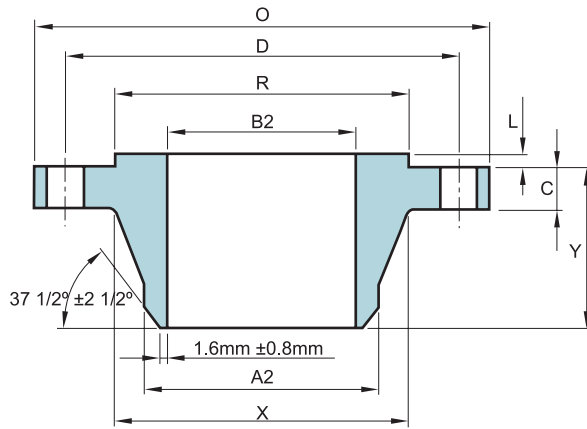


Unit : mm

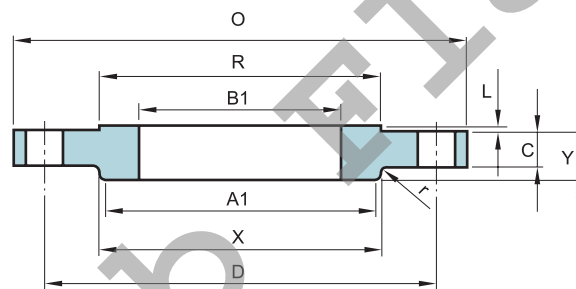
Nominal Pipe Size	Drilling		Facing Dimensions					Length of Stud Bolts		
	Diameter of Bolts	Diameter of Bolt Holes	Raised Face	Ring - Joint			Ring Number	Length of Stud Bolts		
			Outside Diam.	Pitch Diam.	Groove Width	Depth of groove E. Height of facing L.		Diam. of Raised Portion	Raised Face	Ring Joint
R	P	F	L	K						
26	44.5	47.5	749.3	749.3	19.9	12.7	809.6	R93	285.5	317.5
28	47.5	51.0	800.1	800.1	19.9	12.7	860.4	R94	305.5	336.5
30	51.0	54.0	857.3	857.3	19.9	12.7	917.6	R95	324.0	355.5
32	51.0	54.0	914.4	914.4	23.1	14.3	984.3	R96	336.5	374.5
34	51.0	54.0	965.2	965.2	23.1	14.3	1035.1	R97	343.0	381.0
36	51.0	54.0	1022.4	1022.4	23.1	14.3	1092.2	R98	349.5	387.5



## CLASS 600 FLANGES



WELDING NECK



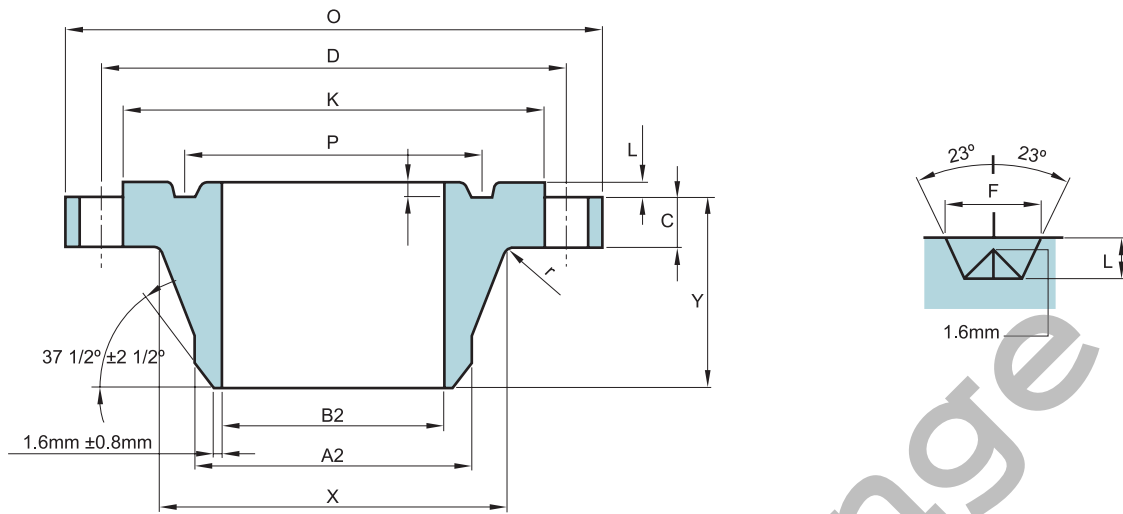
SLIP-ON

Unit : mm

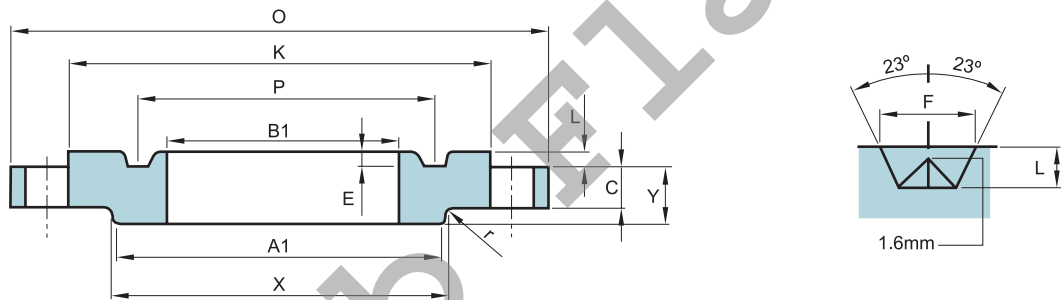
Nominal Pipe Size	O.D. of Flange	Thickness of Flange Min	Outside Diameter of Large End of Hub	Outside Diameter Small end of Hub		Length Thr. Hub Slip-on and Welding Neck	Fillet Radius	Flange Bore		Drilling	
				Slip-on	Welding Neck			Slip-on	Welding Neck	Diameter of Bolt Circle	Number of Bolts
				A1	A2						
26	1016.0	108.0	747.5	706.4	671.5	222.5	14.3	666.8	To Be Specified By The Purchaser	914.4	28
28	1073.0	111.1	803.5	760.4	723.9	235.0	15.9	717.6		965.2	28
30	1130.5	114.3	862.0	814.4	774.7	247.5	17.5	768.4		1022.4	28
32	1194.0	117.5	917.5	868.4	825.5	260.5	17.5	819.2		1079.5	28
34	1244.5	120.7	973.0	922.3	877.9	270.0	19.1	870.0		1130.3	28
36	1314.5	123.8	1032.0	976.3	928.7	282.5	19.1	920.8		1193.8	28



## CLASS 600 FLANGES



WELDING NECK  
RING JOINT



SLIP - ON  
RING JOINT

Unit : mm

Nominal Pipe Size	Drilling		Facing Dimensions					Length of Stud Bolts		
	Diameter of Bolts	Diameter of Bolt Holes	Raised Face	Ring - Joint			Ring Number	Raised Face	Ring Joint	
			Outside Diam.	Pitch Diam.	Groove Width	Depth of groove E. Height of facing L				Diam. of Raised Portion
R	P	F	L	K						
26	47.5	51.0	749.3	749.3	19.9	12.7	809.6	R93	330.0	362.0
28	51.0	54.0	800.1	800.1	19.9	12.7	860.4	R94	343.0	374.5
30	51.0	54.0	857.3	857.3	19.9	12.7	917.6	R95	349.0	381.0
32	57.0	60.5	914.4	914.4	23.1	14.3	984.3	R96	368.5	406.5
34	57.0	60.5	965.2	965.2	23.1	14.3	1035.1	R97	374.5	413.0
36	63.5	66.5	1022.4	1022.4	23.1	14.3	1092.2	R98	393.5	432.0