



**GharbFlange**  
Since 1979

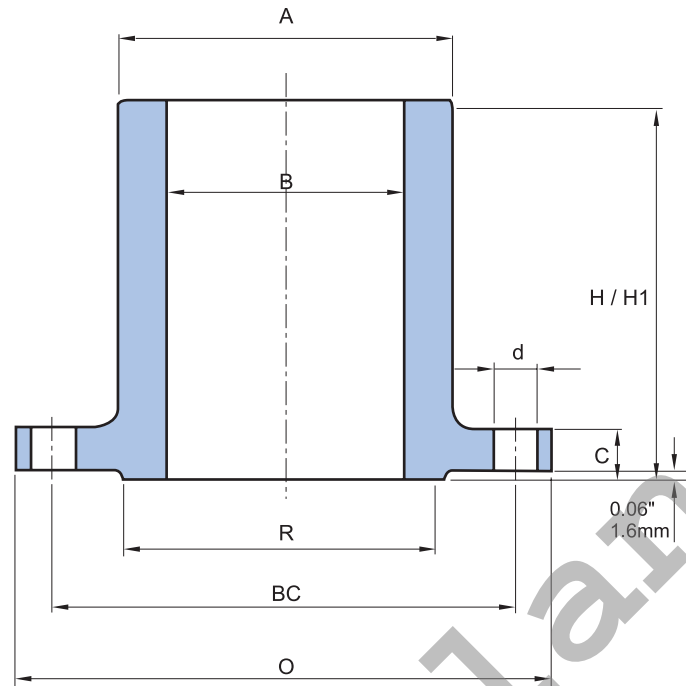
# LONG WELDING NECKS

- Class 150
- Class 300
- Class 400
- Class 600
- Class 900
- Class 1500
- Class 2500





## CLASS 150



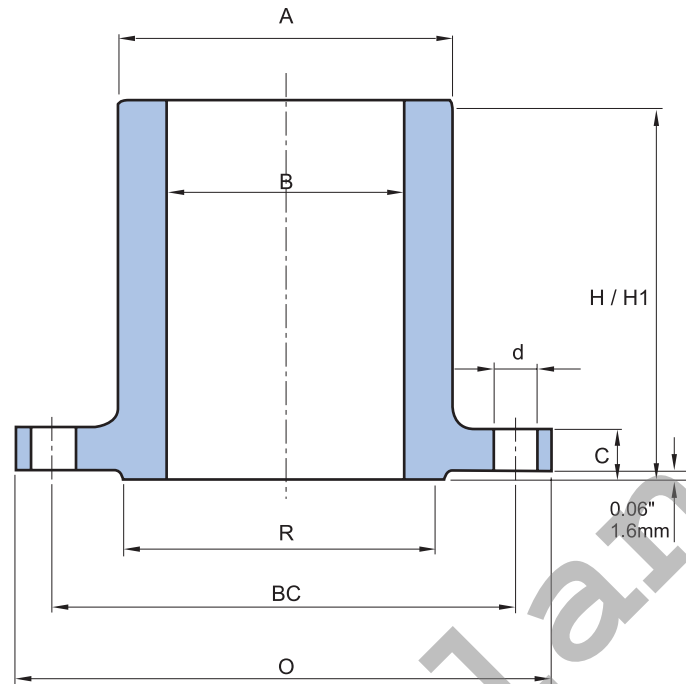
NOTE : H / H1 = CUSTOMER OPTION.

Unit : mm

Nominal Pipe Size	Outside Diameter	Thickness of Flange Min.	O.D. of Raised Face	Hub Diameter at Bevel	Diameter of Bore	Length Through Hub		Drilling		
						H	H1	Diameter of Bolt Circle	Number of Holes	Diameter of Holes
	O	C	R	A	B	H	H1	BC		d
1/2	89.0	11.1	34.9	30.2	12.7	228.6	304.8	60.5	4	15.8
3/4	98.5	12.7	42.9	38.1	19.1	228.6	304.8	69.9	4	15.8
1	108.0	14.3	50.8	50.8	25.4	228.6	304.8	79.4	4	15.8
1 1/4	117.5	15.9	63.5	60.3	31.8	228.6	304.8	88.9	4	15.8
1 1/2	127.0	17.5	73.0	66.7	38.1	228.6	304.8	98.4	4	15.8
2	152.5	19.1	92.1	77.7	50.8	228.6	304.8	120.7	4	19.0
2 1/2	178.0	22.2	104.8	95.2	63.5	228.6	304.8	139.7	4	19.0
3	190.5	23.8	127.0	107.9	76.2	228.6	304.8	152.4	4	19.0
3 1/2	216.0	23.8	139.9	124.0	88.9	228.6	304.8	177.8	8	19.0
4	228.5	23.8	157.2	139.7	101.6	228.6	304.8	190.5	8	19.0
5	254.0	23.8	185.7	165.1	127.0	228.6	304.8	215.9	8	22.5
6	279.5	25.4	215.9	196.8	152.4	228.6	304.8	241.3	8	22.5
8	343.0	28.6	269.9	247.6	203.2	228.6	304.8	298.4	8	22.5
10	406.5	30.2	323.9	304.8	254.0	228.6	304.8	361.9	12	25.5
12	482.5	31.8	381.0	365.1	304.8	228.6	304.8	431.8	12	25.5
14	533.5	34.9	412.8	406.4	355.6	228.6	304.8	476.2	12	28.5
16	597.0	36.5	469.9	457.2	406.4	228.6	304.8	539.7	16	28.5
18	635.0	39.7	533.4	508.0	457.2	228.6	304.8	577.8	16	31.8
20	698.5	42.9	584.2	558.8	508.0	228.6	304.8	635.0	20	31.8
24	813.0	47.0	692.2	666.7	609.6	228.6	304.8	749.3	20	35.1



## CLASS 300



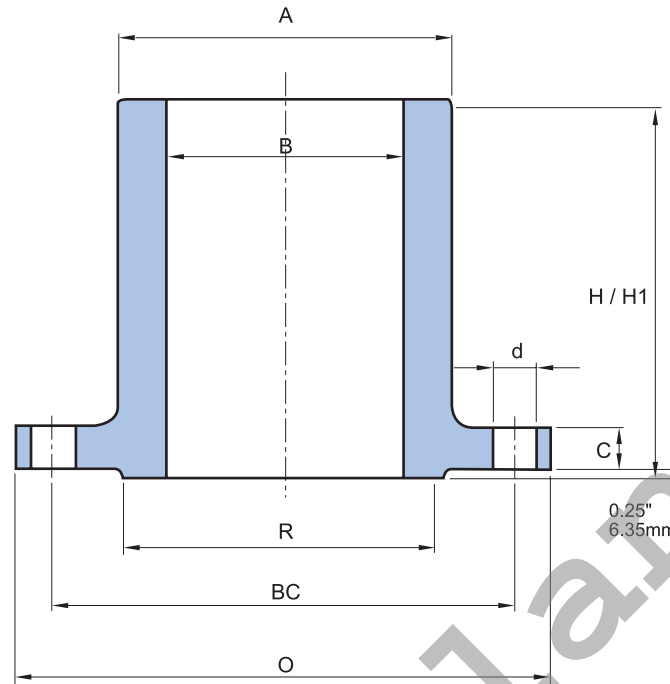
NOTE : H / H1 = CUSTOMER OPTION.

Unit : mm

Nominal Pipe Size	Outside Diameter	Thickness of Flange Min.	O.D. of Raised Face	Hub Diameter at Bevel	Diameter of Bore	Length Through Hub		Drilling		
						H	H1	Diameter of Bolt Circle	Number of Holes	Diameter of Holes
	O	C	R	A	B	H	H1	BC		d
1/2	95.5	14.3	34.9	38.1	12.7	228.6	304.8	66.7	4	15.8
3/4	117.5	15.9	42.9	47.6	19.1	228.6	304.8	82.5	4	19.0
1	124.0	17.5	50.8	54.0	25.4	228.6	304.8	88.9	4	19.0
1 1/4	133.5	19.1	63.5	63.5	31.8	228.6	304.8	98.4	4	19.0
1 1/2	155.5	20.6	73.0	69.8	38.1	228.6	304.8	114.3	4	22.5
2	165.0	22.2	92.1	82.5	50.8	228.6	304.8	127.0	8	19.0
2 1/2	190.5	25.4	104.8	100.0	63.5	228.6	304.8	149.2	8	22.5
3	209.5	28.6	127.0	117.5	76.2	228.6	304.8	168.3	8	22.5
3 1/2	228.5	30.2	139.7	133.4	88.9	228.6	304.8	184.1	8	22.5
4	254.0	31.8	157.2	146.0	101.6	228.6	304.8	200.0	8	22.5
5	279.5	34.9	185.7	177.8	127.0	228.6	304.8	234.9	8	22.5
6	317.5	36.5	215.9	206.4	152.4	228.6	304.8	269.9	12	22.5
8	381.0	41.3	269.9	260.3	203.2	228.6	304.8	330.2	12	25.5
10	444.5	47.6	323.9	320.7	254.0	228.6	304.8	387.3	16	28.5
12	520.5	50.8	381.0	374.6	304.8	228.6	304.8	450.8	16	31.8
14	584.0	54.0	412.8	425.4	355.6	228.6	304.8	514.3	20	31.8
16	647.5	57.2	469.9	482.6	406.4	228.6	304.8	571.5	20	35.1
18	711.0	60.3	533.4	533.4	457.2	228.6	304.8	628.6	24	35.1
20	774.5	63.5	584.2	587.3	508.0	228.6	304.8	685.8	24	35.1
24	914.5	69.9	692.2	701.6	609.6	228.6	304.8	812.8	24	41.2



## CLASS 400



NOTE : H / H1 = CUSTOMER OPTION.

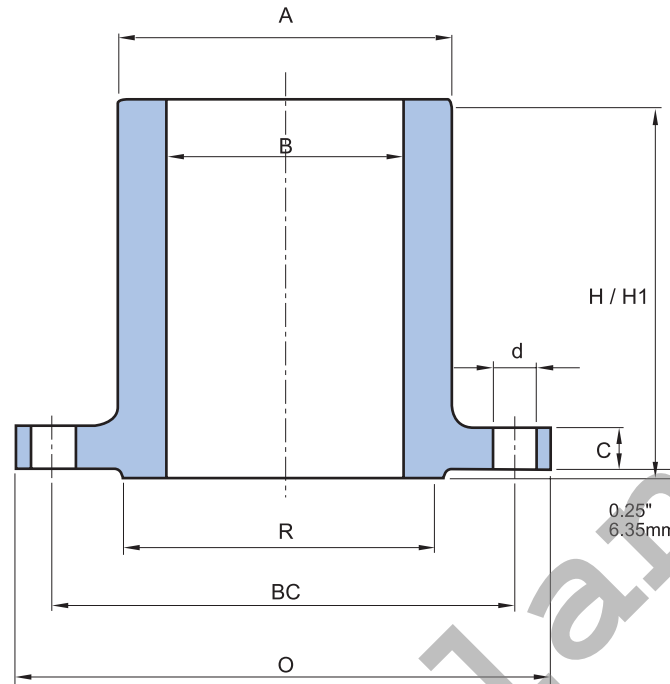
Unit : mm

Nominal Pipe Size	Outside Diameter	Thickness of Flange Min.	O.D. of Raised Face	Hub Diameter at Bevel	Diameter of Bore	Length Through Hub		Drilling		
								Diameter of Bolt Circle	Number of Holes	Diameter of Holes
	O	C	R	A	B	H	H1	BC		d
1										
1 1/4										
1 1/2										
2										
2 1/2										
3										
3 1/2										
4	254.0	34.9	157.2	146.0	101.6	228.6	304.8	200.0	8	25.5
5	279.5	38.1	185.7	177.8	127.0	228.6	304.8	234.9	8	25.5
6	317.5	41.3	215.9	206.4	152.4	228.6	304.8	269.9	12	25.5
8	381.0	47.6	269.9	260.3	203.2	228.6	304.8	330.2	12	28.5
10	444.5	54.0	323.9	320.7	254.0	228.6	304.8	387.3	16	31.8
12	520.5	57.2	381.0	374.6	304.8	228.6	304.8	450.8	16	35.1
14	584.0	60.3	412.8	425.4	355.6	228.6	304.8	514.3	20	35.1
16	647.5	63.5	469.9	482.6	406.4	228.6	304.8	571.5	20	38.1
18	711.0	66.7	533.4	533.4	457.2	228.6	304.8	628.6	24	38.1
20	774.5	69.9	584.2	587.3	508.0	228.6	304.8	685.8	24	41.2
24	914.5	76.2	692.2	701.6	609.6	228.6	304.8	812.8	24	47.8

Use Class 600 Dimensions in These Sizes



## CLASS 600



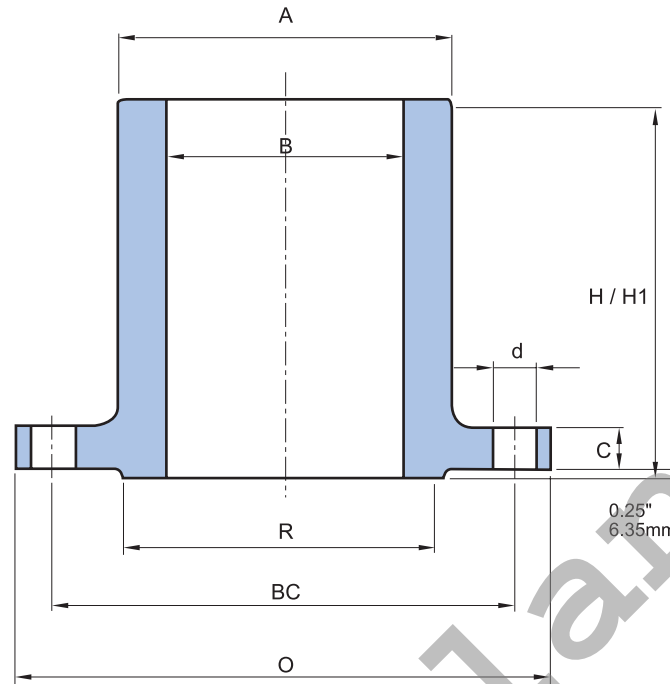
NOTE : H / H1 = CUSTOMER OPTION.

Unit : mm

Nominal Pipe Size	Outside Diameter	Thickness of Flange Min.	O.D. of Raised Face	Hub Diameter at Bevel	Diameter of Bore	Length Through Hub		Drilling		
						H	H1	Diameter of Bolt Circle	Number of Holes	Diameter of Holes
	O	C	R	A	B	H	H1	BC		d
1	124.0	17.5	50.8	54.0	25.4	228.6	304.8	88.9	4	19.0
1 1/4	133.5	20.6	63.5	63.5	31.8	228.6	304.8	98.4	4	19.0
1 1/2	155.5	22.2	73.0	69.8	38.1	228.6	304.8	114.3	4	22.5
2	165.0	25.4	92.1	82.5	50.8	228.6	304.8	127.0	8	19.0
2 1/2	190.5	28.6	104.8	100.0	63.5	228.6	304.8	149.2	8	22.5
3	209.5	31.8	127.0	117.5	76.2	228.6	304.8	168.1	8	22.5
3 1/2	228.5	34.9	139.7	133.4	88.9	228.6	304.8	184.2	8	25.5
4	273.0	38.1	157.2	152.4	101.6	228.6	304.8	215.9	8	25.5
5	330.0	44.5	185.7	190.5	127.0	228.6	304.8	266.7	8	28.5
6	355.5	47.6	215.9	222.2	152.4	228.6	304.8	292.1	12	28.5
8	419.0	55.6	269.9	273.0	203.2	228.6	304.8	349.3	12	31.8
10	508.0	63.5	323.9	342.9	254.0	228.6	304.8	431.8	16	35.1
12	559.0	66.7	381.0	400.0	304.8	228.6	304.8	489.0	20	35.1
14	603.5	69.9	412.8	431.8	355.6	228.6	304.8	527.1	20	38.1
16	686.0	76.2	469.9	495.3	406.4	228.6	304.8	603.3	20	41.2
18	743.0	82.6	533.4	546.1	457.2	228.6	304.8	654.1	20	44.5
20	813.0	88.9	584.2	609.6	508.0	228.6	304.8	723.9	24	44.5
24	940.0	101.6	692.2	717.5	609.6	228.6	304.8	838.2	24	50.8



## CLASS 900



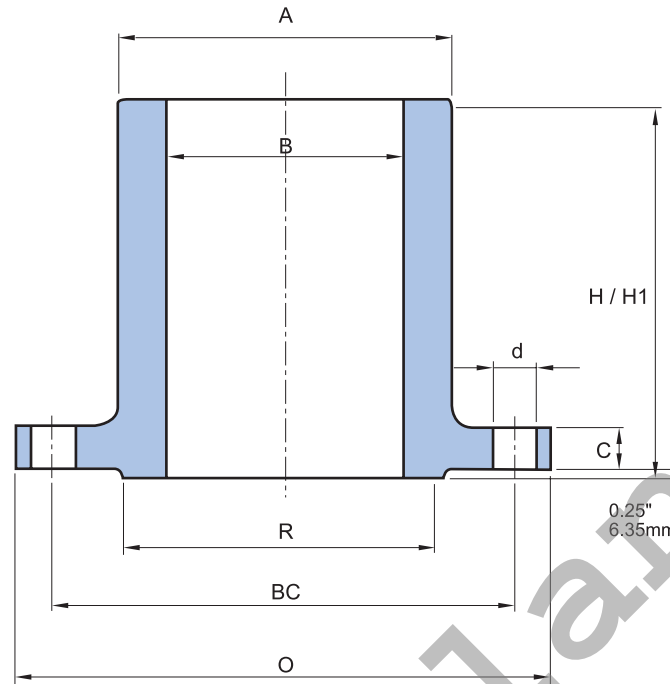
NOTE : H / H1 = CUSTOMER OPTION.

Unit : mm

Nominal Pipe Size	Outside Diameter	Thickness of Flange Min.	O.D. of Raised Face	Hub Diameter at Bevel	Diameter of Bore	Length Through Hub		Drilling		
						H	H1	Diameter of Bolt Circle	Number of Holes	Diameter of Holes
	O	C	R	A	B	H	H1	BC		d
1	149.5	28.6	50.8	52.4	25.4	228.6	304.8	101.6	4	25.5
1 1/4	159.0	28.6	63.5	63.5	31.8	228.6	304.8	111.1	4	25.5
1 1/2	178.0	31.8	73.0	69.9	38.1	228.6	304.8	123.8	4	28.5
2	216.0	38.1	92.1	104.8	50.8	228.6	304.8	165.1	8	25.5
2 1/2	244.5	41.3	104.8	123.8	63.5	228.6	304.8	190.5	8	28.5
3	241.5	38.1	127.0	127.0	76.2	228.6	304.8	190.5	8	25.5
4	292.0	44.5	157.2	158.7	101.6	228.6	304.8	235.0	8	31.8
5	349.5	50.8	185.7	190.5	127.0	228.6	304.8	279.4	8	35.1
6	381.0	55.6	215.9	235.0	152.4	228.6	304.8	317.5	12	31.8
8	470.0	63.5	269.9	298.5	203.2	228.6	304.8	393.7	12	38.1
10	546.0	69.9	323.9	368.3	254.0	228.6	304.8	469.9	16	38.1
12	609.5	79.4	381.0	419.1	304.8	228.6	304.8	533.4	20	38.1
14	641.5	85.7	412.8	450.9	355.6	228.6	304.8	558.8	20	41.0
16	705.0	88.9	469.9	508.0	406.4	228.6	304.8	616.0	20	44.5
18	787.5	101.6	533.4	565.2	457.2	228.6	304.8	685.8	20	50.8
20	857.5	108.0	584.2	622.3	508.0	228.6	304.8	749.3	20	54.0
24	1014.5	139.7	692.2	749.3	609.6	228.6	304.8	901.7	20	66.5



## CLASS 1500



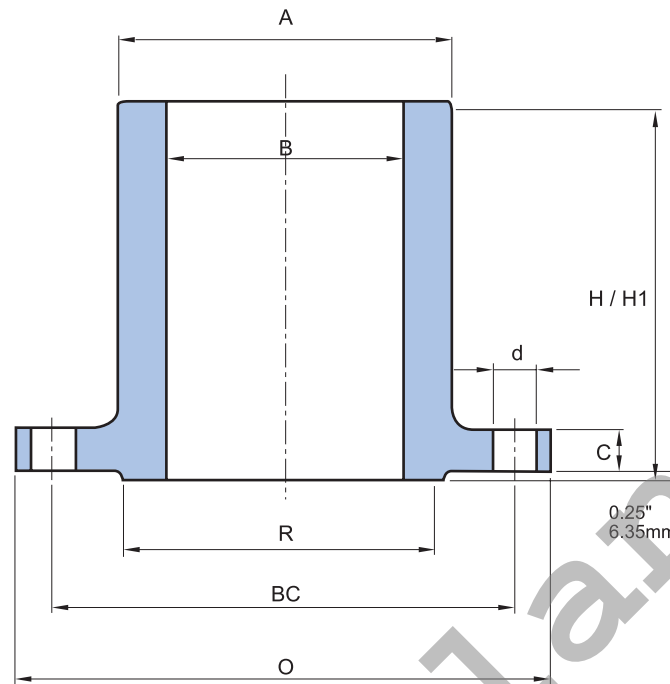
NOTE : H / H1 = CUSTOMER OPTION.

Unit : mm

Nominal Pipe Size	Outside Diameter	Thickness of Flange Min.	O.D. of Raised Face	Hub Diameter at Bevel	Diameter of Bore	Length Through Hub		Drilling		
						H	H1	Diameter of Bolt Circle	Number of Holes	Diameter of Holes
	O	C	R	A	B	H	H1	BC		d
1	149.5	28.6	50.8	52.4	25.4	228.6	304.8	101.6	4	25.5
1 1/4	159.0	28.6	63.5	63.5	31.8	228.6	304.8	111.1	4	25.5
1 1/2	178.0	31.8	73.0	69.9	38.1	228.6	304.8	123.8	4	28.5
2	216.0	38.1	92.1	104.8	50.8	228.6	304.8	165.1	8	25.5
2 1/2	244.5	41.3	104.8	123.8	63.5	228.6	304.8	190.5	8	28.5
3	267.0	47.6	127.0	133.4	76.2	228.6	304.8	203.2	8	31.8
4	311.0	54.0	157.2	161.9	101.6	228.6	304.8	241.3	8	35.1
5	374.5	73.0	185.7	196.9	127.0	228.6	304.8	292.1	8	41.0
6	393.5	82.6	215.9	228.6	152.4	228.6	304.8	317.5	12	38.1
8	483.0	92.1	269.9	292.1	203.2	228.6	304.8	393.7	12	44.5
10	584.0	108.0	323.9	368.3	254.0	406.4	406.4	482.6	12	50.8
12	673.0	123.8	381.0	450.9	304.8	406.4	406.4	571.5	16	54.0
14	749.5	133.4	412.8	495.3	355.6	-	-	635.0	16	60.5
16	825.5	146.1	469.9	552.5	406.4	-	-	704.9	16	66.5
18	914.5	161.9	533.4	596.9	457.2	-	-	774.7	16	73.0
20	984.0	177.8	584.2	641.4	508.0	-	-	831.9	16	79.5
24	1168.5	203.2	692.2	762.0	609.6	-	-	990.6	16	92.0



## CLASS 2500



NOTE : H / H1 = CUSTOMER OPTION.

Unit : mm

Nominal Pipe Size	Outside Diameter	Thickness of Flange Min.	O.D. of Raised Face	Hub Diameter at Bevel	Diameter of Bore	Length Through Hub		Drilling		
								Diameter of Bolt Circle	Number of Holes	Diameter of Holes
O	C	R	A	B	H	H1	BC	d		
1	159.0	34.9	50.8	57.2	25.4	228.6	304.8	108.0	4	25.5
1 1/4	184.0	38.1	63.5	73.0	31.8	228.6	304.8	130.2	4	28.5
1 1/2	203.0	44.5	73.0	79.4	38.1	228.6	304.8	146.1	4	31.8
2	235.0	50.8	92.1	95.3	50.8	228.6	304.8	171.5	8	28.5
2 1/2	267.0	57.2	104.8	114.3	63.5	228.6	304.8	196.9	8	31.8
3	305.0	66.7	127.0	133.4	76.2	228.6	304.8	228.6	8	35.0
4	355.5	76.2	157.2	165.1	101.6	228.6	304.8	273.1	8	41.0
5	419.0	92.1	185.7	203.2	127.0	228.6	304.8	323.9	8	48.0
6	483.0	108.0	215.9	235.0	152.4	228.6	304.8	368.3	8	54.0
8	552.5	127.0	269.9	304.8	203.2	228.6	304.8	438.2	12	54.0
10	673.0	165.1	323.9	374.7	254.0	406.4	406.4	539.8	12	66.5
12	762.0	184.2	381.0	441.3	304.8	406.4	406.4	619.1	12	73.0